

Camlocks

disc tumbler multi application

FEATURES & BENEFITS:

- **New Feature:** 2 key pulls to allow for 90 and 180 degree key release
- Can be Masterkeyed
- Material: Pressure cast
- Regular Key Changes: 200 with key blank 5865JVR (5 disc), 700 with key blank 8658JVR (6 disc)
- Masterkeyed Key Changes: 180 with key blank 5860KS (5 disc), 700 with key blank 5861KS (6 disc)
- Cam Positions: Regularly furnished with cam mounted at 12 o'clock locked position. Cam may be mounted at 3, 6, 9, or 12 o'clock locked position.
- Cam Rotation: Regular rotation 90 degrees from 12 to 9 o'clock, key removable only in locked position at 12. Also available with 180 degree rotation from 12 to 6 o'clock so key can be withdrawn in both locked and unlocked positions.
- Cylinder: Slabbed on both sides



301 West Hintz Road
Wheeling, IL 60090
Telephone: 800.733.8588
Fax: 847.537.1881
www.cclsecurity.com
A Proud Union Company. (S.E.I.U.)



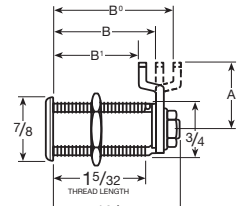
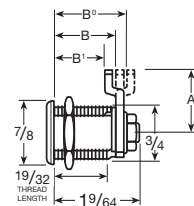
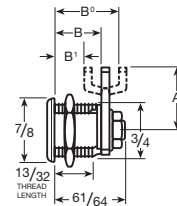
CCL Security Products offers multi-application single bitted Disc Tumbler Camlocks. These are diecast and can be Masterkeyed. All the locks are individually polybagged including a C2S straight cam and a C4L/C6L offset cam, the pronged washer, a 180 degree cam stop, and a collar ring.

Camlocks

disc tumbler multi application

FEATURES & BENEFITS:

- **New Feature:** 2 key pulls to allow for 90 and 180 degree key release
- Can be Masterkeyed
- Material: Pressure cast
- Regular Key Changes: 200 with key blank 5865JVR (5 disc), 700 with key blank 8658JVR (6 disc)
- Masterkeyed Key Changes: 180 with key blank 5860KS (5 disc), 700 with key blank 5861KS (6 disc)
- Cam Positions: Regularly furnished with cam mounted at 12 o'clock locked position. Cam may be mounted at 3, 6, 9, or 12 o'clock locked position.
- Cam Rotation: Regular rotation 90 degrees from 12 to 9 o'clock, key removable only in locked position at 12. Also available with 180 degree rotation from 12 to 6 o'clock so key can be withdrawn in both locked and unlocked positions.
- Cylinder: Slabbed on both sides



| Part No/Cyl Length | Stock ID No. | MKYD | US4 | US26D | Stock Qty. | Approx. Boxed Wt. (lbs./ oz.) |
|--|--------------|------|-----|-------|------------|-------------------------------|
| 15751 | | | | | | |
| B15751 KD | 00218 | | | | 25 | 5/9 |
| B15751 KA - CAT30 | 00219 | | | | 25 | 5/9 |
| B15751 CAT60 | 02656 | | | | 25 | 5/9 |
| B15751 MKY M8003(KD) | 02654 | | | | 25 | 5/9 |
| B15751 | | | | | | |
| C15751 | | | | | | |
| 15752 | | | | | | |
| B15752 KD | 02645 | | | | 25 | 5/9 |
| B15752 KA - CAT30 | 02660 | | | | 25 | 5/9 |
| B15752 CAT60 | 02661 | | | | 25 | 5/9 |
| B15752 MKY M8003(KD) | 02662 | | | | 25 | 5/9 |
| B15752 | | | | | | |
| 15753 | | | | | | |
| 15760 | | | | | | |
| B15760 KD | 00220 | | | | 25 | 5/9 |
| B15760 KA - CAT30 | 02908 | | | | 25 | 5/9 |
| B15760 CAT60 | 02659 | | | | 25 | 5/9 |
| B15760 AUE1 | 02664 | | | | 25 | 5/9 |
| B15760 MKY M8003(KD) | 02665 | | | | 25 | 5/9 |
| B15760 | | | | | | |
| K15760 Camlock, KD, Carded | 00222 | | | | 8 | 2/2 |
| K15760A Camlock, KA - CAT30, Carded | 00223 | | | | 8 | 2/2 |
| K15760 Carded | | | | | | |
| K15760A KA - CAT30, Carded | | | | | | |

• Stock items are not shaded and are available in stock quantity units only. Use Stock ID No. when ordering stock items.
 • Made - To - Order items are shaded.

| CAM NO. | LENGTH CAM A | B | DISTANCE UNDER HEAD TO CAM | | | | | | | |
|---------|--------------|------|----------------------------|------|--------|--------|--------|------|--------|--------|
| | | | 15751 | | | 15752 | | | 15760 | |
| | | | B' | B° | B | B' | B° | B | B' | B° |
| C2S | 7/8" | 5/8" | | | 13/16" | | | 1/4" | | |
| C2L | 1 1/4" | 5/8" | | | 13/16" | | | 1/4" | | |
| C3S | 7/8" | | 1/2" | | | 11/16" | | | 1 1/8" | |
| C3L | 1 1/4" | | 1/8" | | | 11/16" | | | 1 1/8" | |
| C4S | 7/8" | | 3/8" | | | 9/16" | | | 1" | |
| C4L | 1 1/4" | | 3/8" | | | 9/16" | | | 1" | |
| C5S | 7/8" | | | 3/4" | | | 15/16" | | | 1 3/8" |
| C5L | 1 1/4" | | | 3/4" | | | 15/16" | | | 1 3/8" |
| C6S | 7/8" | | | 7/8" | | | 11/16" | | | 1 1/2" |
| C6L | 1 1/4" | | | 7/8" | | | 11/16" | | | 1 1/2" |



301 West Hintz Road
 Wheeling, IL 60090
 Telephone: 800.733.8588
 Fax: 847.537.1881
 www.cclsecurity.com
 A Proud Union Company. (S.E.I.U.)